

**KOVA**  
S E L E C T

## Install Instructions

Product  
Wall-Mounted Lavatory Faucet

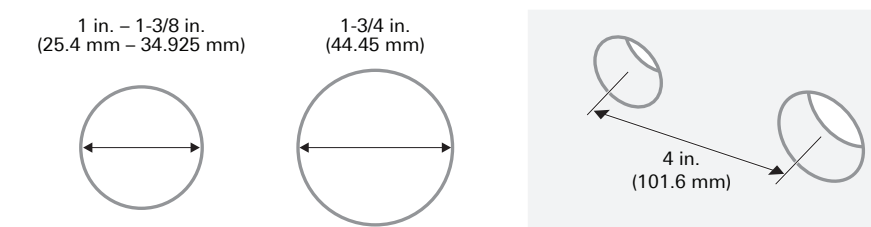
Model Number  
K0000000688 / K0000000689 / K0000000690  
Polished Chrome    Brushed Nickel    Matte Black

[kovaproducts.com](http://kovaproducts.com)

279.05 mm  
[11.00 in.]

### Hole Dimensions for the Mixer and a Spout

If you need to drill holes for the mixer, please adhere to these dimensions:



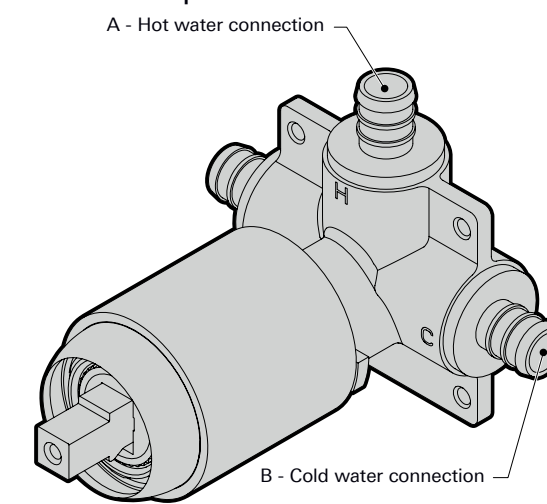
### Before You Begin

Turn off all water supply valves, remove the old faucet (if necessary), and ensure the installation surface is clean.

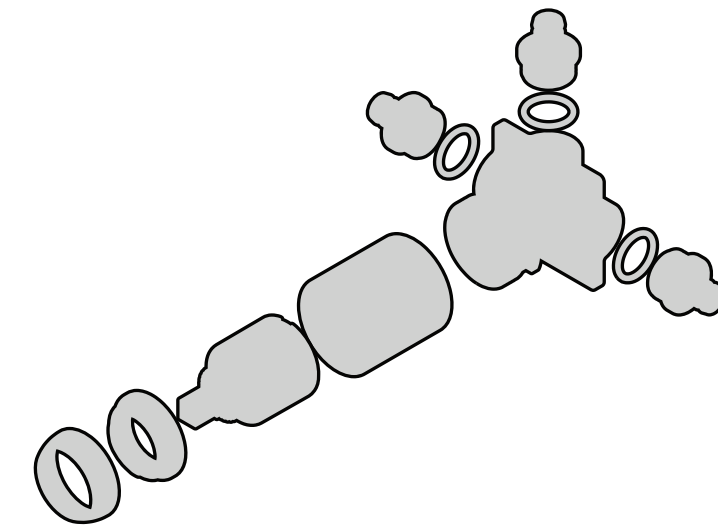
### Recommended Installation Order

1. Install the mixer.
2. Install the handle.
3. Install the spout.
4. Install the pop-up assembly.

### Mixer Product Description

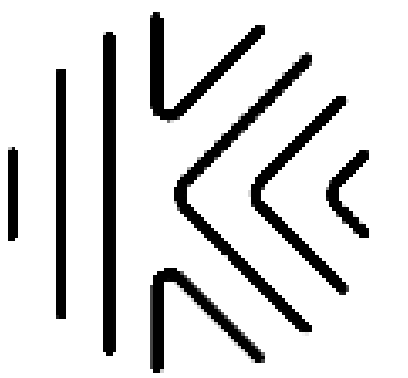


### Exploded View



1. Material: 70# (105.35 gsm) semi-gloss paper facestock
2. Fonts: Only Arial font may be used by suppliers to fill in the required information on the product labels. Minimum allowed font size is 8 pt.
3. Allowed Print Colors:

Color	HTML Color Code	RGB	CMYK	PMS
White	#FFFFFF	R 255 G 255 B 255	White	White
Off White	#F8F8F8	R 248 G 248 B 248	C 3 M 3 Y 6 K 7	Warm Grey 1C
Light Grey	#E1E1E1	R 208 G 208 B 208	C 18 M 13 Y 15 K 0	Cool Grey 2C
Mid Grey	#747474	R 116 G 116 B 116	C 62 M 52 Y 48 K 19	Cool Grey 10C
Ash	#2D2D2D	R 45 G 45 B 45	C 63 M 62 Y 59 K 88	439C
Coal	#101820	R 16 G 24 B 32	C 100 M 79 Y 44 K 93	Black 6C
Sol	#16621	R 242 G 102 B 33	C 1 M 74 Y 100 K 0	165C



**KATERRA**

542 1ST AVE SOUTH, SUITE 400  
SEATTLE, WASHINGTON 98104

ALL DRAWINGS, SPECIFICATIONS, PLANS, IDEAS, ARRANGEMENTS AND DESIGNS REPRESENTED OR REFERRED TO ARE THE PROPERTY OF AND ARE OWNED BY KATERRA INC. WHETHER THE PROJECT FOR WHICH THEY ARE MADE IS EXECUTED OR NOT. THEY WERE CREATED, EVOLVED, DEVELOPED AND PRODUCED FOR THE SOLE USE ON AND IN CONNECTION WITH THIS PROJECT AND NONE OF THE ABOVE MAY BE DISCLOSED OR GIVEN TO OR USED BY ANY PERSON, FIRM OR CORPORATION FOR ANY USE OR PURPOSE WHATSOEVER INCLUDING ANY OTHER PROJECT, EXCEPT UPON WRITTEN PERMISSION AND DIRECTION OF KATERRA INC.

© 2019 KATERRA, INC.

KS

DOCUMENT

VERSION

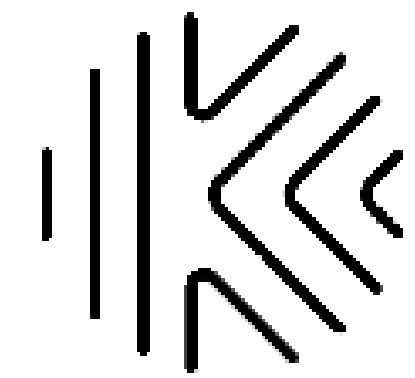
AUTHOR

ALL UNITS ARE IN MILLIMETERS  
UNLESS OTHERWISE STATED

TOLLERANCES ARE +/- 0.1 UNLESS  
OTHERWISE STATED

PAGE 1 OF 1

SCALE: 1:1



**KATERRA**

542 1ST AVE SOUTH, SUITE 400  
SEATTLE, WASHINGTON 98104

ALL DRAWINGS, SPECIFICATIONS, PLANS, IDEAS, ARRANGEMENTS AND DESIGNS REPRESENTED OR REFERRED TO ARE THE PROPERTY OF AND ARE OWNED BY KATERRA INC. WHETHER THE PROJECT FOR WHICH THEY ARE MADE IS EXECUTED OR NOT. THEY WERE CREATED, EVOLVED, DEVELOPED AND PRODUCED FOR THE SOLE USE ON AND IN CONNECTION WITH THIS PROJECT AND NONE OF THE ABOVE MAY BE DISCLOSED OR GIVEN TO OR USED BY ANY PERSON, FIRM OR CORPORATION FOR ANY USE OR PURPOSE WHATSOEVER INCLUDING ANY OTHER PROJECT, EXCEPT UPON WRITTEN PERMISSION AND DIRECTION OF KATERRA INC.

© 2019 KATERRA, INC.

1. Material: 70# (105.35 gsm) semi-gloss paper facestock
2. Fonts: Only Arial font may be used by suppliers to fill in the required information on the product labels. Minimum allowed font size is 8 pt.

3. Allowed Print Colors:

Color	HTML Color Code	RGB	CMYK	PMS
White	#FFFFFF	R 255 G 255 B 255	White	White
Off White	#F8F8F8	R 248 G 248 B 248	C 3 M 3 Y 6 K 7	Warm Grey 1C
Light Grey	#E1E1E1	R 208 G 208 B 208	C 18 M 13 Y 15 K 0	Cool Grey 2C
Mid Grey	#747474	R 116 G 116 B 116	C 62 M 52 Y 48 K 19	Cool Grey 10C
Ash	#2D2D2D	R 45 G 45 B 45	C 63 M 62 Y 59 K 88	439C
Coal	#101820	R 16 G 24 B 32	C 100 M 79 Y 44 K 93	Black 6C
Sol	#16621	R 242 G 102 B 33	C 1 M 74 Y 100 K 0	165C

279.05 mm  
[11.00 in]

507.65 mm  
[20.00 in]

Hot connection  
Cold connection  
Spout piping  
Mud cover

3. Connect the mixer to water supplies using the proper fittings.
4. This installation requires 1/2 in. NPT drop ear that is mounted on the same plane as the mixer valve. Mixer valve should extend 5/8 in. (16 mm) beyond the finished surface.

A B C

2. Place the handle body (A) over the mixer. Secure in place using the set screw (B). Tighten with the hex wrench (E).
3. Screw the lever (C) onto the set screw (B).

A B

2. Place the escutcheon plate (B) onto the spout (A) and wrap threaded connections with thread sealant tape.

D

1. Remove the mud cover from the mixer. Then remove the paper backing from the back of the escutcheon plate (D) and place it over the mixer until it adheres to the wall.

A B

3. Thread the spout (A) into the drop ear and carefully tighten with your hand or a strap wrench (if required).
4. Push the escutcheon plate (B) back against the wall and hold in place for a few seconds to ensure it adheres to the surface.

#### 4 Install the Pop-Up Assembly

1. Place the pop-up body (B) and top rubber gasket (C) into the sink.
2. Secure the pop-up body (B) in place using the bottom rubber gasket (D), plastic washer (E), and retaining nut (F).
3. Secure the drain pipe (H) to the pop-up body (B) using the drain nut (G).
4. Insert the pop-up (A) down into the pop-up body (B).

#### Operate the Mixer Handle

- Pull the mixer handle up to turn water on and push down to turn water off.
- Turn the mixer handle to the left for hot water and to the right for cold water.

#### Care and Maintenance

Clean periodically with a soft cloth. Avoid abrasive cleaners and chemicals as this could damage the fixture.

#### Troubleshooting

**CAUTION:** Turn off all water connections and relieve pressure before working on the faucet.

Problem	Probable Cause	Solution
There are leaks underneath the mixer.	The cartridge in the mixer has come loose.	Remove the handle body from the mixer and tighten the cartridge using an adjustable wrench.
The aerator leaks or has an inconsistent water flow pattern.	The aerator is dirty, worn out, is not fitting correctly.	Use the included aerator tool to unscrew the aerator. Clean or replace the aerator.
The water does not shut off completely.	The washer in the cartridge of the mixer is either dirty or worn out.	Remove the handle body from the mixer. Then remove the entire valve assembly, remove and replace the cartridge if necessary, and check if the valve is damaged or dirty.

K0000000688-K0000000689-K0000000690 PAGE 2/2

KS

DOCUMENT  
KS INSTALL MANUAL

VERSION  
V0.1

DATE  
09/04/2019

AUTHOR  
VT

ALL UNITS ARE IN MILLIMETERS  
UNLESS OTHERWISE STATED

TOLLERANCES ARE +/- 0.1 UNLESS  
OTHERWISE STATED

PAGE 1 OF 1

SCALE: 1:1